

BATTLE CHESS MANUAL ADDENDUM

<u>PAGE</u>	<u>CHANGE</u>
9	“Queen for a Knight” changed to “Knight for a Queen” in second paragraph
16	“ch” changed to “ch (or +)” in Figure 21
20	“Black’s poor responses” changed to “White’s poor responses” in last paragraph
20	“Figure 29” caption changed to “Figure 30”
20	“Figure 30” changed to “Figure 31” in second to last paragraph
21	“Figure 30” caption changed to “Figure 31”
21	“and Scholar’s Mate” changed to “and the Black Queen in the Scholar’s Mate”
26-33	All instances of “1-0” changed to “1-Ø”
26-33	All instances of “0-1” changed to “Ø-1”

The illustrations at the bottom of Page 12 should include Figures 16a to 16f, as follows:

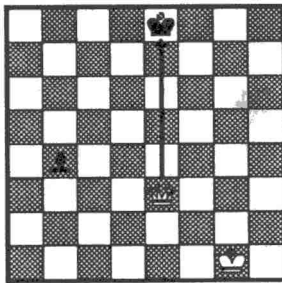


Figure 16a.

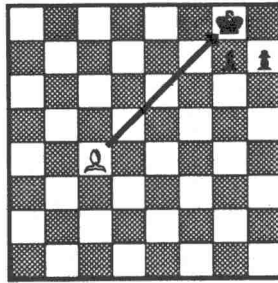


Figure 16b.

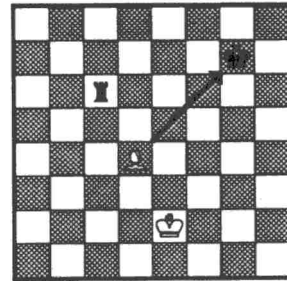


Figure 16c.

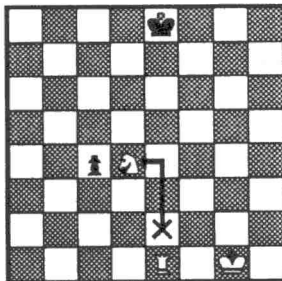


Figure 16d.

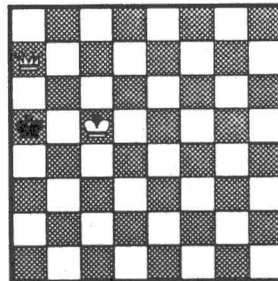


Figure 16e.

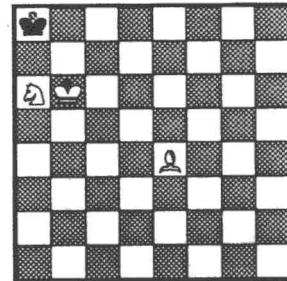


Figure 16f.